

park*lane®
JEWELRY | SINCE 1955

A U S T R A L I A



PARK LANE JEWELLERY COLLECTIONS

Find your favorite metals, colors and beading.



PARK LANE STORY

Founded in Chicago in 1955 by Arthur and Shirley LeVin, Park Lane Jewellery defines 'The American Dream'. As the world's leading direct sales jewellery party plan company, Park Lane proudly offers exceptional quality jewellery that is backed by an unconditional guarantee. Park Lane creations are inspired by world-renowned designers. Wear Park Lane jewellery with pride, and you will sparkle with beauty and confidence everywhere you go!



Shirley LeVin
Company Founder



Scott LeVin
C.E.O.



Mark LeVin
Corporate VP



Arthur LeVin III
Corporate VP



PARK LANE FOR E!

Park Lane has co-branded with E! Entertainment to bring you an exclusive, celebrity style jewellery line.

Ask your Director for Park Lane's E! Red Carpet Collection catalog.

BONUS ITEM SALE FOR CUSTOMERS

ORDER TOTAL	\$30 - \$59	\$60 - \$89	\$90+
# of Bonus Items	1 (equal to ORDER TOTAL)	2 (each equal to ORDER TOTAL)	3 (each equal to ORDER TOTAL)
\$ Bonus Item	\$17	\$17 + \$17	\$17 + \$17 + \$17



Choose an item from the **Thank You Award** Collection for only \$17.



Receive **\$20 hostess credit** for every order. With 10 or more orders, receive **\$40 hostess credit** for every order.

FIVE STAR HOSTESS PLAN



Hostesses may purchase **four items at half price.**



Hostesses may purchase **four Hostess Only Collection items** at a special discount!



With 3 qualified bookings, receive **\$200 shopping credit** for just \$20 plus choose a **FREE Three Booking Gift!**

H E M A T I T E

C o l l e c t i o n





Spellbound Earring 12366

A cobalt blue teardrop gem and one accent crystal. \$15



Spellbound Necklace 12365

A cluster pendant of cobalt stones accented by crystal gems is suspended from a hematite chain. 16"+3" ext. \$64



Hooty Ring 11587

This 3-D owl is hematite and fully encrusted with Austrian crystals. Size 5-10. \$76



Twilight Ring 10707

Encrusted with sizzling jet CZ's this three dimensional ring is a true show stopper. Size 6-10 \$175



Linked In Bracelet 12235

Burnished, brushed hematite and silver links fashion this bold chain. 7 1/2". \$41





Chic Necklace 10209

This 48" hematite chain features interlocking O-rings. Available in silver, gold or rose gold. \$65

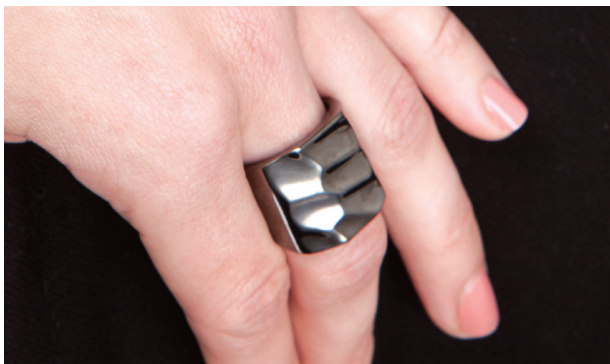
Glam & Go Necklace 11994

Staggered black and silver chains mixed with smoky gray glass beads. Toggle & ring closure. Also Available in gold with copper glass beads. 34". \$143



Savvy Bracelet 12389

Edgy, hammered hematite cuff measures 2-inches wide. Stretches to fit. \$98



Savvy Ring 12326

Hammered hematite, bold wide band. Size 6-10. \$38



Point of View Earrings 11998

V-shaped chevron earrings glisten with hematite Austrian crystals. \$76



Point of View Necklace 11997

Suspended from a long silver chain, this chevron pendant is embellished with hematite Austrian crystals. 30"+3"ext. \$75



Santa Cruz Ring 6950

The wide shank of this ring is crowned by genuine marcasite gems. Sizes 5-10. \$54



Supreme Ring 8492

The curved crown of this ring is silver ring is encrusted with black pave cubic zirconias and outlined with clears CZs. Sizes 6-10. \$84

Intertwine Earrings 12003

These are just right when all you need is a small accent. Available in silver, gold, hematite or rose gold finish. \$31





Midnight Necklace
12357

Jet orbit beads and crystal-embellished spheres slide along the tinsel chain and line up at its base. 16"+3" ext. \$43

Fashion-Able Necklace
8781

This 60" hematite chain is punctuated by faceted jet beads. *Model also wearing Midnight Necklace \$90

Majesty Ring 10975

A floating oval cubic zirconia sparkles in the center of this unique ring. Sizes 5-10. \$76



Intimate Earrings
10908

Petite post earrings that sparkle with Swarovski crystals. \$32



Erika Earrings 12238

Shimmering jet and hematite crystals accent these deco-inspired drop earrings. \$32



Christian Necklace 11632
Bold hematite cross adorned by
glittering rows of dark crystals.
20". \$125

FOR HIM OR FOR HER

Matrix Ring 11768
Atop a bold hematite
shank sits a faceted
pentagon-shape dome,
edged with bead work.
Size 5-10. \$74



Jolt Necklace 11943
Hematite lightning bolt
suspended from
hematite chain.
19"+3" ext. \$46
FOR HIM OR FOR HER



Ovation Ring 12227
The wide band of this
airy ring is embellished
with glittering circles of
Austrian crystals
Available in silver
or hematite. Size 5-10 \$64





Espana Necklace 11860 *on model
Suspended from a hematite chain, this filigree amulet is embellished with black enamel and accented with Austrian crystals. 18"+2"ext. \$72



Diamond Dust Necklace 11496
This 66" chain is punctuated by stations of glittering hematite beads. \$75



Tuxedo Ring 11898
A glittering pool of jet Austrian crystals, outlines with a crystal frame mounted on a silver saddle ring. Sizes 5-10. \$140



Encore Earrings 11941
Hematite scroll work accented with aurora borealis and topaz Austrian crystals. \$20



Game On Earrings 11939
Teardrop-shaped hematite fishhook earrings sparkle smoky Austrian crystals. 2"long. \$27



Stack It Ring 11552
Elegant hematite band featuring clear and jet CZ's. Wear one or wear three, this ring is designed to be worn in multiples. Sizes 5-10 \$65



Linked In Necklace

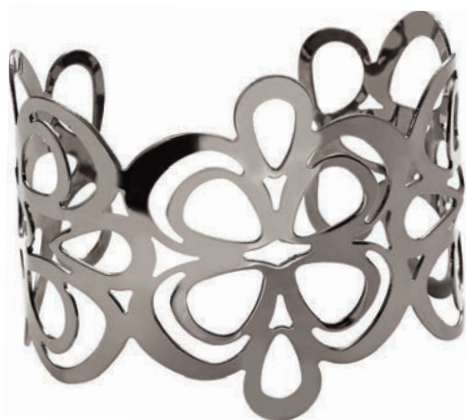
12234

This burnished bold hematite link necklace features two silver links cantered in front. 17" long. \$70



Verona Necklace 10074

Verona 32" long garland chain is a wardrobe staple. Available in gold, silver, hematite or rose gold. \$82



Chic Bracelet 12212

This sensational cuff is dramatic, yet lightweight and flexible. Available in hematite, gold, silver or rose gold. \$43



En Vogue Earring 12354

Gently-hammered bold hoop earrings measure 1 3/4" long. Available in rose gold or hematite. \$37

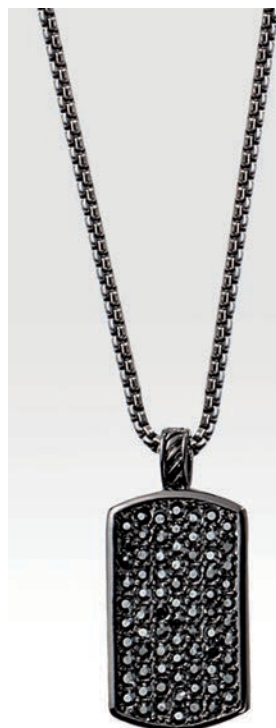




Reveal Necklace 12002

Multiple strands of hematite chain hold bold links encrusted with sparkling diamond like crystals. 16"+3"ext.

Available in hematite or gold. \$380



Fame Necklace

11117

Stunning dog-tag pendant encrusted with black Austrian crystals. 20". \$140

FOR HIM OR FOR HER



In the Loop Bracelet 12001

Large oval hematite links embellished with Austrian crystals. 7 1/2" +1"ext. \$242





High Voltage Necklace 12217

Rows of square-cut hematite beads parade along the neckline of this necklace. 16"+3" ext. \$195



Scandal Earrings 12233

Dress with a downtown urban edge in these spiked hoop earrings. Available in hematite, silver, or gold. \$35

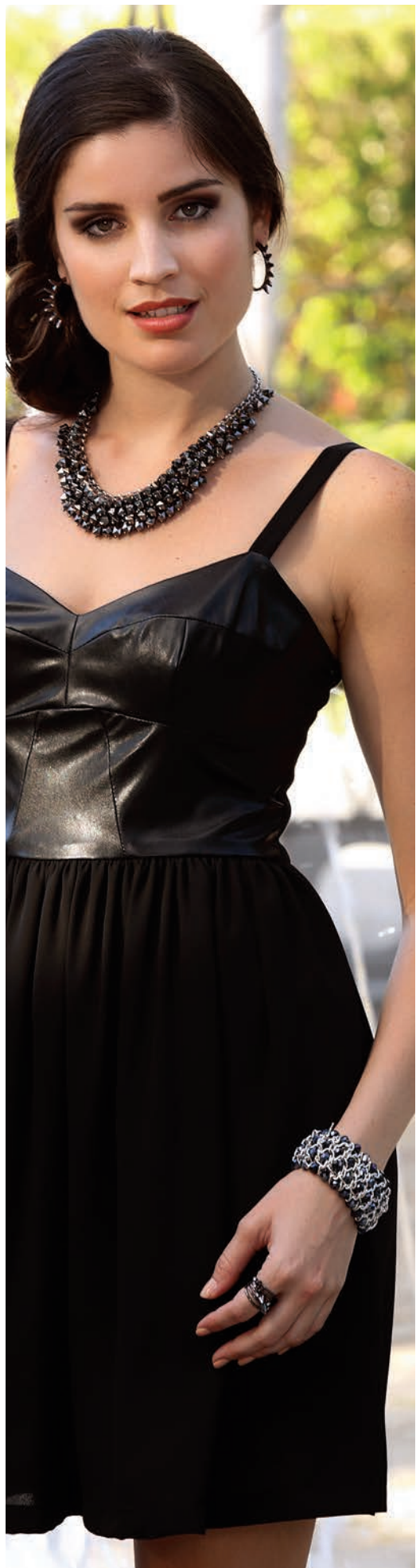


Dare Ring 11833

Hematite-plated wire ring wraps your finger with Austrian crystals and spike accents. Sizes 5-10. \$40

Gorgeous Bracelet 11911

Jet black glass beads woven into silver chain cuff that stretches to fit the wrist. Also Available in gold with topaz beads. \$65





Step-Up Earrings 11712

Light weight duo of etched ovals.
Available in rose gold or hematite. \$20



Reign Ring 8440

A genuine marcasite setting surrounds a cushion cut CZ. Size 4-10. \$60

Glitter Girl Necklace 11352

Bright hematite faceted glass roundels and beads, hang from this double loop necklace that is adorned with glittering crystal covered spheres.
34" long. \$94



Step-Up Necklace

11711 *on model
Textured ovals and crystal-encrusted disks punctuate this necklace.
Available in rose gold or hematite. 36"+3" etc. \$92



Francais Ring 10264
Alternating sections of rich black enamel and sparkling pave Swarovski crystals adorn the slightly domed band. Size 5-10. \$54

Legacy Earring 8057

Classic hoop earrings embedded with marcasite gems. \$60



Onyx Ring 11275
Genuine onyx cabochon gemstone, framed by glittering faux diamond crystals. Size 5-10. \$109



Starring Role Necklace 11448

A sparkling sphere of dark colored crystals are suspended from six long strands of delicate hematite-plated chain. 31"+3" ext. \$140



En Vogue Earring 12354

Gently-hammered bold hoop earrings measure 1 3/4" long. Available in rose gold or hematite. \$37



En Vogue Necklace 12355

Anchored by sections of chain, gently-hammered oval links fashion a bold necklace. 25"+3" ext. Available in rose gold or hematite. \$102



CLASSIC RINGS

Collection



Believe Ring 8817

A lustrous solitaire glass pearl nestled in between two CZ's.

Size 6-10. \$36



Classique Ring 12316

Rose gold, classic eternity band ring is channel-set with cubic zirconias.

Size 6-10. \$32



Rising Star Ring 12324

A petite star, embellished with marcasite, crowns this dainty ring.

Size 6-10. \$29



Reign Ring 8440

A Genuine marcasite setting surrounds a cushion cut CZ.

Size 4-10. \$60



Stack It Ring 11552

Elegant hematite band featuring clear and jet CZ's. This ring is designed to be worn in multiples.

Sizes 5-10 \$65



Secret Ring 11563

Crystal studded key charm dangles from Austrian crystal adorned rose gold ring.

Sizes 5-10 \$43



Upon a Star Ring 8042

Cubic zirconia ring features a shooting star design.

Sizes 6-10 \$57



Amour Ring 11195

Petite elegant script spells "love" including a Swarovski crystal.

Sizes 5-9 \$26

STATEMENT RINGS

Collection



Dynamite Ring 11916
Austrian crystal dome ring with silver shank. Available in lavender, clear, black, topaz. Size 5-10. \$151



Twilight Ring 10707
A three dimensional flower encrusted with sizzling jet CZ's. Size 6-10 \$175



Onyx Ring 11275
Genuine onyx cabochon gemstone, framed by glittering faux diamond crystals! Size 5-10. \$125



Ovation Ring 12227
The wide band of this airy ring is embellished with glittering circles of Austrian crystals Available in silver or hematite. Sizes 5-10. \$64



Magical Ring 12375
The filigree shank showcases a black teardrop gem framed by gray crystals. Sizes 6-10. \$98



Spoil Me Ring 11027
Luminous glass pearl is surrounded by a sparkling skirt of cubic zirconias. Sizes 5-10. \$109



Wisteria Ring 12351
Ombre-blended rows merge lavender, clear, violet and purple crystals on this silver dome ring Sizes 6-10. \$76



Imperial Ring 12344
Clear crystals surround a mega carat topaz Austrian crystal gem. Sizes 6-10. \$87

P E T I T E E A R R I N G S

C o l l e c t i o n



Adore Earrings 12327
Puffed hearts suspended from earring wires. Available in silver or gold. \$26



Dainty Earrings 12386
Silver heart-shaped earrings embellished with mini crystals. \$17



Cleo Earrings 12387
Petite golden pyramids encrusted with mini crystals. \$21



Vivid Earrings 12371
emerald-cut rectangular CZ gems are prong-set. Available in silver or gold. \$65



Eternity Earrings 12388
Silver cross-shaped post earrings. \$17



Infinite Earrings 12385
Silver infinity symbol earrings sprinkled with mini crystals. \$17

STATEMENT EARRINGS

Collection



Filigree Earrings 12380
Simulated turquoise gems sway from delicate golden filigree earrings. \$38



La Femme Earrings 12382
Crystals sizzle on these rose gold chandelier earrings. \$43



Versailles Earrings 12383
Gray marquise-cut crystals in an ornate gold setting surround a black teardrop gem. \$36



Evening Sky Earrings 12378
Front and back of these disk earrings are embellished with jet and clear crystals. \$31



Peach Bellini Earrings 12335
Beveled glass mirrored rectangles, edged in silver. \$44



Starburst Earrings 12379
Bursts of marquise-cut glass gems, set in gold, are embellished with crystals. \$42



R O S E G O L D

C o l l e c t i o n





Seduction Necklace 12225
Multi-strand Y necklace includes sections of rose gold and black chain. \$81

Joyride Necklace 12241
Quatrefoil-shaped polished pendant suspended from a 13-inch long chain (3" ext.). Available in hematite, gold, rose gold or silver finish. \$38



Joyride Earrings 11940
Quatrefoil-shaped polished hoop earrings with integrated posts. Available in hematite, gold, rose gold, or silver finish. \$27



Applause Ring 12230
Multicolor CZs in ruby, sapphire, amethyst and diamond adorn the crown on this rose gold ring. Sizes 5-10. \$91



Rosa Bracelet 11599
Rose gold filigree hinged cuff detailed with cut out flowers with tiny Austrian crystals. \$140





Chic Necklace 10209
 This 48" rose gold chain features interlocking O-rings. Available in hematite, silver, gold & rose gold. \$65



Constellation Ring 12249
 Silver and gold swirls set with Austrian crystals. Sizes 5-10 \$104



En Vogue Necklace 12355
 Gently-hammered oval links fashion a bold necklace. 25"+3" ext. Available in rose gold and hematite. \$102



En Vogue Earrings 12354
 Gently-hammered bold hoop earrings measure 1 3/4" long. Available silver, gold, hematite, rose gold finish. \$37



Connections Bracelet

12005

Layer this bold open link chain bracelet. Available in hematite, silver, gold & rose gold. 7 1/2"+1"ext. \$42



Dominique Bracelets

11763

Set of five gently-hammered bangle bracelets. Sold in a set of five bangles, one hematite, one silver, one gold, two rose gold. \$82



Stylish Bracelet 12232

Hinged bracelet features dimpled design and is shaped to fit the wrist. Available in polished silver, gold, or rose gold finish. \$164



Step-Up Earrings 11712

Light weight duo of etched ovals. Available in rose gold or hematite. \$20



Step-Up Necklace 11711

Textured ovals and crystal encrusted disks punctuate this necklace. Available in rose gold or hematite. 36"+3"etc. \$92

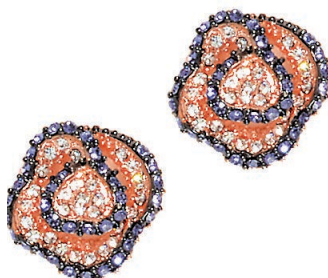




**Camellia Necklace
11534**

A dazzling flower petal of clear and periwinkle Austrian crystals hangs from a rose gold chain. Available 16" +3" ext. \$130

Camellia Ring 11535
Mounted in rose gold, these clear Austrian crystals are nestled against periwinkle edges of each flower petal. Sizes 5-10. \$129



Camellia Earrings 11536
Mounted in rose gold, these clear Austrian crystals are nestled against periwinkle edges of each flower petal. \$104



Secret Ring 11563
Crystal studded key charm dangles from Austrian crystal adorned rose gold ring. Sizes 5-10 \$43

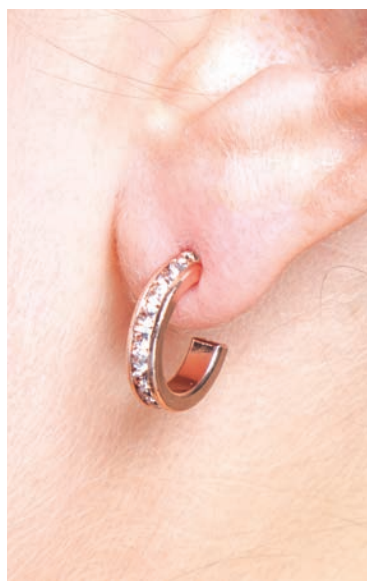


Belle Earrings 12237

Textured rose gold fashions double teardrop earrings that shimmer with mini Austrian crystals. \$36



Classique Ring 12316
Rose gold, classic eternity band ring is channel-set with cubic zirconias. Size 6-10. \$32



**Classique Earrings
12315**

Petite, rose gold hoop earrings are channel-set with cubic zirconias. \$35





Verona Necklace 10074

Verona 32" long garland chain is a wardrobe staple. Available in gold, silver, hematite or rose gold. \$82

Chic Bracelet 12212

Dramatic cuff yet lightweight, bold and flexible. Available in hematite, gold, silver or rose gold. \$43





G O L D

C o l l e c t i o n





Très Chic Earrings 12356

Large hoops edged with black fashioning two-tone earrings. Available in black with gold or black with silver. \$31



Versailles Necklace 12311

Art deco-inspired pendant of black and clear crystal gems is suspended from a silky black cord, accented with gold. 19"+2 1/2"ext. \$228



Everyday Diva Necklace 11932

Quatrefoil-shaped glass gems are positioned along the delicate chains of this 38" longnecklace. Toggle & ring closure. Silver with faceted clear glass stones. Gold with faceted golden topaz glass stones. \$140

Stargazer Necklace 12226

Long strand of jet black faceted glass beads is paired with a delicate gold chain punctuated with gold stars. 38"+2"ext. \$103



POLY VORE



Reveal Necklace 12002

Multiple strands of gold chain hold bold gold links encrusted with sparkling diamond like crystals. 16"+3" ext. Available in hematite or gold. \$380

Connections Necklace 12004

Bold open links fashions this chain necklace. 18"+3" ext. Available in silver, hematite, gold or rose gold. \$76



Electrify Earrings 8740

Classic polished hoops. Available in silver or gold. \$25

Palm Beach Ring 11269

Green tear drop cat's eye gemstones arranged to form a flower around a pave crystal. Sizes 5-10. \$137





Gorgeous Bracelet 11911
 Topaz glass beads are woven into gold chain to create this cuff that stretches to fit the wrist. Also Available in hematite with jet black glass beads. \$65



Glam & Go Necklace 11994
 Staggered black chains mix with strands of burnished gold chain and smoky copper colored glass beads. Also Available in silver with smoky gray glass beads. \$143

Main Event Necklace 12363
 This exotic bib necklace features a lush cascade of burnished gold fringe. 13"+3" \$219



Spike Ring 11720
 Golden spikes rise from glittering gold topaz crystals in this dome ring. Sizes 5-10. \$124

Main Event Earrings 12364
 A cluster of burnished gold chains fashions each 3" long fringed earring. \$42



Ivoire Necklace 12369

Clusters of ivory-colored gems mounted in ornate settings are accented by sparkling Austrian crystals. 16" + 3" ext. \$102

Ivoire Earrings 12370

Ivory-colored gemstone earrings are highlighted by glittering crystals. \$41

***Rodeo Drive Necklace 12283***

Bead edged quatrefoils that sparkle with pave Austrian crystals. The glittering drop necklace measures 16" long + a 3" extension. Available in silver or gold. \$118

Rodeo Drive Earrings 12286

Bead edged quatrefoils that sparkle with pave Austrian crystals. The glittering, drop pierced earrings measure 2 inches long. Available in silver or gold. \$69





Brunette Earrings
11903

The spokes of these burnished gold earrings are tipped with chocolate topaz Austrian crystals. A champagne colored glass gem adorns the center. \$76



Brunette Necklace 11902

Bib necklace with chocolate topaz and champagne colored glass beads and satin-finish gold spheres. 18"+3" ext. \$181



Antigua Ring 10925

Burnished finish, an exotic imprint, and champagne colored frosted glass gem adorn this ring. Size 5-10. \$32



Truffles Ring 10779

Sparkling gems of gold and amber faux topaz blanket this hematite dome ring. Size 5-10. \$103



Vintage Ring 11129

Satin finished burnished brass bow ring. Sizes 5-10. \$43





Fascinated Necklace 12253

Black cord woven through bold links with clear and mirrored charms suspended and framed in gold. 16"+3"ext. \$121



Fascinated Earrings 12254

Black bead and a mirror finish pendant framed in gold. \$32



Tier Drop Earrings 11942

Wreath of dainty leaves fashion bold, lightweight drop earrings. Available in gold or hematite. 3" long. \$20



Connections Bracelet 12005

Layer this bold open link chain bracelet. Available in hematite, silver, gold or rose gold. 7 1/2"+1"ext. \$42

Diamond Couture Necklace 11700

16-inch long gold chain fastens with a crystal-encrusted toggle & ring. \$108

Diamond Couture Bracelet 11701

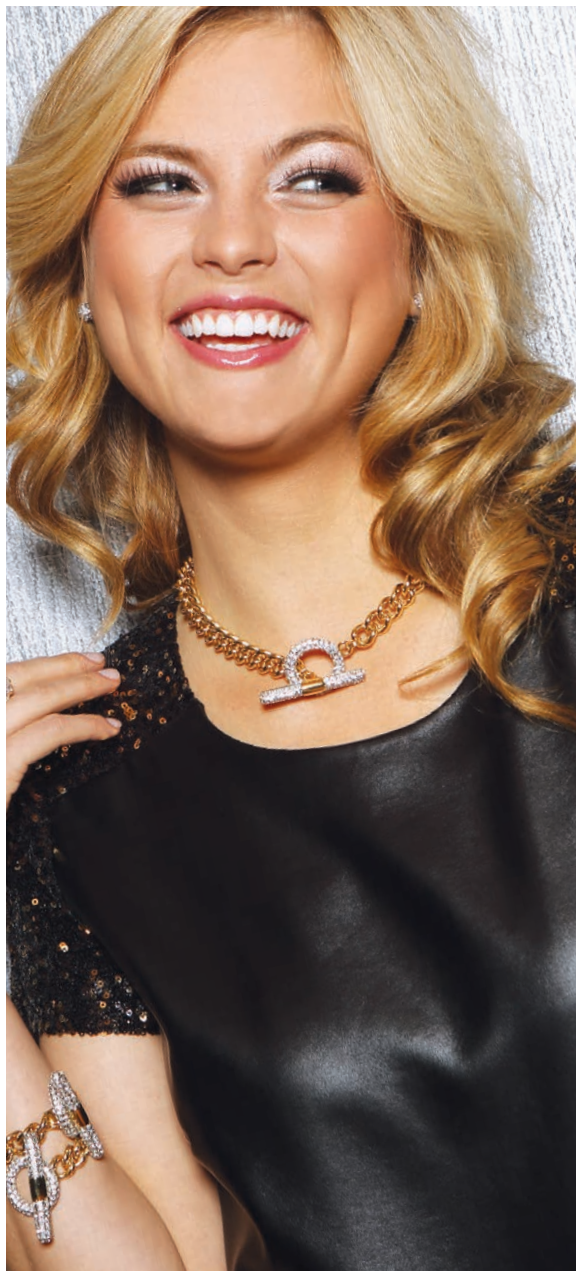
**Model's are wearing two*

7 1/2-inch long gold chain fastens with a crystal-encrusted toggle & ring. \$96

Dynamite Ring 11916

Austrian crystal dome ring with silver shank. Available in lavender, clear, black or topaz.

Size 5-10. \$151





Le Louvre Necklace 12312

Black acrylic gems framed in gold are suspended from an open-link chain threaded with black ribbon. 18" + 3" ext. \$178

Très Chic Earrings 12356

Large hoops edged with black fashioning two-tone earrings. Available in black with gold or black with silver. \$31

Encircle Bracelet 12319

This slender, slip-on gold bracelet is channel-set with CZs. Available with clear or black CZs. Sold separately. \$76



Bellini Earrings 12240

A faceted jet crystal teardrop is surrounded by a frame of crystals and a lacy gold border. \$36



Verona Necklace 10074

Verona 32" long garland chain is a wardrobe staple. Available in gold, silver, hematite or rose gold finish. \$82



Scandal Earrings 12233

Dress with an urban edge in these spiked hoop earrings. Available in hematite, silver, or gold finish. \$35



Flair Bracelet 10287

Nineteen flexible coils alternating between cable and smooth texture, create the ultimate bold cuff. Available in silver or gold finish. \$27



Truth Necklace 11736

A dainty, matte gold cross adorns the 16"+4 ext" fine black chain of Truth necklace. \$29



Studded Ring 11224

Bold dome covered with pyramid shaped studs. Available in silver or gold finish. Sizes 5-10. \$50



Lacy Earrings 12236

Dainty golden filigree teardrops will be your go-to earrings for any occasion. \$20

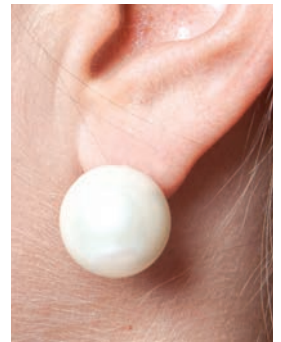
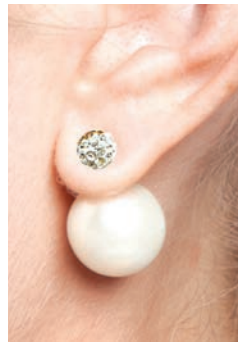
PEARLS & CRYSTALS

C o l l e c t i o n



Sateen Necklace 12353

Glass pearls attached by silver rings, are individually suspended from a navy blue cord. 16"+2" ext. \$109



Double Take Earrings 12349

A large pearl on one side; a crystal-embellished sphere on the other. Wear either side in the front. \$73



Angel Bracelet 11852

Dramatic filigree bracelet stretches to fit the wrist. Available in rose gold or silver. \$82



I Do Earrings 10570

A sparkling cluster of diamond cubic zirconias and a solitaire glass pearl drop. \$37



Believe Ring 8817

A lustrous solitaire glass pearl, flanked on each side by a prong-set sparkling CZ. Sizes 6-10. \$36



I Do Necklace 10569

The pendant is a sparkling cluster of diamond cubic zirconias and a solitaire glass pearl drop. Necklace is 16" long with a 3" extension. \$51





Kate Earrings 11443
Simple, pink pearl earring studs.
\$24



Kate Bracelet 11446
Double stranded, lustrous soft pink glass pearls are fastened by a silver bow accented with crystals. \$76



Matinee Necklace 0891
This 54-inch long endless strand of lustrous glass pearls can be knotted, doubled, twisted or layered. \$50



Spoil Me Ring 11027
Glass pearl surrounded by a sparkling skirt of cubic zirconias.
Sizes 5-10. \$109



Kate Necklace 11445
The single 19" strand of lustrous soft pink glass pearls is fastened by a silver bow accented with crystals. \$80



Matinee Earrings 0892
Glass pearl post earrings. \$11



French Vanilla Necklace 12373

Alternating large glass pearls in three shade; cream, caramel, and taupe. 16"+3"ext. \$76



French Vanilla Bracelet 12372

Alternating shades of glass pearl; cream, caramel and taupe. Stretches to fit. \$50

New Moon Ring 10808

This luminous mother-of-pearl gem is cushion-mounted in a modern, gleaming silver setting. Sizes 5-10. \$80



Hilo Necklace 11756

Glass pearls of soft gray, hematite gray and creamy white. 47 1/2" long strand can be worn layered, stacked, or knotted. \$65

Heiress Necklace 3133

The traditional filigree locking clasp is the finishing touch to this luscious single strand of double knotted glass pearls. 20" long. \$21





Foursquare Necklace 12270
Smoky gray glass cubes and opalescent beads connect with crystal embedded magnetic spheres. Add the bracelet to lengthen. The shorter strand can be worn as a choker.
36" long. \$121

Remove the bottom section of "Foursquare" necklace to create two shorter necklaces.

**THREE LOOKS
IN ONE**

*Four Square
Bracelet
12271*

Smoky gray glass cubes fasten with a magnetized crystal encrusted sphere. 8" long.
\$40



Four Square Earrings 12272
A duo of smoky gray glass cubes. \$21



Four Square Earrings 12272
A duo of smoky blue glass cubes. \$21



Four Square Bracelet 12271
Smoky blue glass cubes fasten with a magnetized crystal encrusted sphere. 8" long. \$40

THREE LOOKS IN ONE



Foursquare Necklace 12270
Smoky blue glass cubes and opalescent beads connect with crystal embedded magnetic spheres. Add the bracelet to lengthen. The shorter strand can be worn as a choker. 36" long. \$121





THREE LOOKS IN ONE

Imagine Bracelet 11558

The bracelet's roundels separate hematite clusters from jet crystals. Closed by a magnetic sphere with Austrian crystals. Measures 7 1/2". \$76



Magical Ring 12375

The filigree shank showcases a black teardrop gem framed by gray crystals. Sizes 6-10 \$98



Imagine Necklace 11557

Jet orbit beads and jet baby seed beads. Jet jewels and Austrian crystal encrusted magnetic spheres anchor the two ends together. Necklace can be worn 17"- 34" long. \$152





THREE LOOKS IN ONE

Remove the bottom section of "Imagine" or "Magnificent" necklace to create two shorter necklaces.



Magnificent Earrings 12269
A trio of mauve colored aurora borealis faceted glass bead earrings. \$16



Magnificent Necklace 12268
Multiple strands of mauve colored aurora borealis glass beads that can be worn long, short, straight, or asymmetrical. The necklace connects with crystal embedded magnetic spheres. 36" long. \$115





- A. Midori Necklace 12330**
Navy blue, gray and opalescent glass beads are staged along a strand of sage green glass beads. 48" long. \$120
- B. Sway Necklace 12329**
A tassel of opalescent beads sways on a necklace of opal, blue-gray, green and aqua glass beads. 36" long. \$102

- A. Brad Bracelet 11624**
Tiger-eyed gem bracelet with a burnished silver accent. Stretches to fit. \$80
- B. Get Lucky Bracelet 12347**
Marbled black glass beads and a white agate accented by crystals and golden charms symbolizing luck and good fortune. Stretches to fit. \$42
- C. Zac Bracelet 11625**
Green jade gem bracelet with a burnished silver accent. Stretches to fit. \$62
- D. Mingle Bracelet 12346**
Simulated turquoise beads accented by a sparkling sphere, roundels, and burnished silver charms. Stretches to fit. \$48
- E. Rico Bracelet 11551**
Cord-wrapped, onyx beads. Solo bead of mini hematite crystals. Adjust to fit by tugging end of each strand. \$98
- F. Moulin Rouge Bracelet 12348**
Red glass beads accented by crystals and charms symbolizing luck and good fortune. Stretches to fit. \$40

H I S A N D H E R S





Midori Earrings 12331

A trio of sage green and opalescent navy glass beads. \$22



Caribbean Necklace 12301

A profusion of wafer-thin, mother-of-pearl teardrops. Statement necklace. 16"+3" ext. \$402



Festive Earrings 11996

Clusters of aurora borealis briolette glass gems are suspended by sections of gold chain. \$74



Festive Necklace 11995

Suspended from a golden chain, aurora borealis briolette glass gems. 24" long. \$156





Freestyle Necklace 11924

A 15-inch long strand of Iridescent olivine Austrian crystals fastens with a magnet concealed in a sparkling sphere which can be worn attached to the 3 strand, 20-inch necklace of green glass gems, strands of olivine crystal beads and textured rose gold. \$152

Freestyle Earrings 11925

A faceted cube and a diamond shaped iridescent green glass gem are each suspended from drop earrings by a strand of olivine crystal beads and a section of shimmering rose gold chain. \$30

THREE LOOKS IN ONE

Remove the bottom section of "Freestyle" or "Role Model" necklace to create two shorter necklaces.



THREE LOOKS IN ONE



Role Model Necklace 12267
Multiple strands of gold baby seed beads and emerald green aurora borealis beads connect with magnetized crystal encrusted spheres. Wear long, or shorten to fashion a single or multi-strand choker. 34"+ 3" ext. \$120





S I L V E R

C o l l e c t i o n



Fascinated Earrings 12254

A black bead and a silver framed blue glass gem fashion drop earrings. \$32



Fascinated Necklace 12253

Silver framed blue and clear glass pendants are suspended from a matte silver chain woven with black ribbon. 16"+3"ext. \$121



Bliss Necklace 11397

Wafer-thin charms, with embellished with sparkling crystals. 35" + 2" long, matte silver chain. \$63



Bliss Bracelet 10892

Three matte bangles are accented with random crystals. Set of 3 bracelets. \$73

Unite Ring 6473

Inspired by a world famous designer, this ring is comprised of three permanently entwined silver bands. Sizes 6-10. \$39



Trillion Earrings 12221

These miniature diamond shaped stud earrings sparkle with baby CZs. \$36





Verona Necklace 10074

The cut edges of the oval garland links add extra sparkle to this 32" long lean chain.

Available in silver, hematite rose gold, or gold finish. \$82



Angel Necklace 11851

Two lacy filigree wings spread to fashion a lacy collar necklace. 16"+3"ext. Available in rose gold or silver. \$70



Angel Bracelet 11852

Dramatic filigree bracelet stretches to fit the wrist. Available in rose gold or silver. \$82





Model is wearing:

Backstage Pass Neck Chain 12391

Gray crystal bar pendant suspended from a hematite chain that fastens in front with a lobster clasp.

Adjustable; 20" long. \$75



Bravo Wrist Chain 8874

Each stainless steel link of this 8 1/2 inch long bracelet is enhanced by twin textured rods.

\$151



Spartas Wrist Chain 10449

This designer inspired bracelet is fashioned from satin-finish silver bars accented with Greek key motif. Stainless steel and 8 1/2" long. \$184

FOR HIM OR FOR HER



Fame Ring 1112

Wide saddle dome ring with CZs. Sizes 6-13. \$160



Spartas Ring 10526

This wide, sleek silver band is etched with the classic Greek key motif. Sizes 8-13. \$74



Bravo Ring 10078

Sleek and contemporary, stainless steel band with twin textured rods. Sizes 8-14. \$92



Bravo Necklace 8908

Sleek and contemporary, no frills stainless steel necklace. 18" long. \$91



Identity Bracelet 12207

A bar embedded with Austrian crystals amps up this classic and rugged ID bracelet. 8 1/2" long. Fold-over clasp. \$164





Whimsy Necklace 12208

Delicate silver chain punctuated with fleurettes, quatrefoils, a butterfly and a heart. Detailing is presented in mother-of-pearl, blue lapis, white shapes and black onyx. 34"+3"ext. \$107



Très Chic Earrings 12356

Large hoops edged with black fashioning two-tone earrings. Available in black with gold or black with silver. \$31



Ovation Ring 12227

Wide band embellished with glittering circles of miniature Austrian crystals. Available in silver or hematite. Sizes 5-10. \$64



Aspen Ring 11748

Framed druzy gems and sparkling solo crystal. Sizes 5-10. \$60



Rodeo Drive Necklace 12283

Bead edged quatrefoils that sparkle with pave Austrian crystals. The glittering drop necklace measures 16" long + a 3" extension. Available in silver or gold. \$118



Rodeo Drive Earrings 12286

Bead edged quatrefoils that sparkle with pave Austrian crystals. The glittering, drop pierced earrings measure 2 inches long. Available in silver or gold. \$69



Euphoria Earrings 12219

Quatrefoil shaped mother-of-pearl earrings are outlined in glittering Austrian crystals. \$84



Everyday Diva Necklace 11932

Quatrefoil shaped glass gems on a delicate chain. 38" long. Toggle & ring closure. Available in silver with faceted clear glass stones or gold with faceted golden topaz glass stones. \$140



Euphoria Necklace 12218

Framed by glittering Austrian crystals, the genuine mother-of-pearl quatrefoil pendant is suspended from a box link silver chain. 18" long. \$95





Breathtaking Necklace 11190

The spectacular necklace is complemented by exquisite pear-cut CZ drop earrings that flash sensuous sparkle with your every move. \$532



Breathtaking Earrings 11191

Exquisite pear-cut CZ drop earrings that flash sensuous sparkle with your every move. \$121



Bombshell Ring 12252

A large, faceted square cut CZ is the centerpiece of this magnificent ring. The ring's split shank is encrusted with micro-mini Austrian crystals. Sizes 5-10. \$76

BRIDE TO BE



Kimberly Earrings 11189

A scintillating procession of six glittering CZ's connects to fashion Kimberly earrings. Pierced earrings are post style. \$175



Sweet Earrings 10785

Dramatic shoulder dusting chain tassel earrings that take Sweet to a whole different level! \$21



Sweet Necklace 10738

Three staggered length strands of delicate chain are adorned with faceted acrylic gems of different shapes. 16" + 3" ext. \$50



Delicate Earrings 12239

The intricate design of these deco-inspired earrings is further enhanced by a glittering circle of Austrian crystals. \$40



Sparkling Earrings 12243

Classic earrings feature a sparkling CZ solitaire with an Austrian crystal halo. \$64



Mia Necklace 12333

An Austrian crystal cluster pendant suspended from a fine silver chain. 16"+2" ext. \$61



Flirt Earrings 12345

Wide silver hoops, edged with mini Austrian crystals, feature a faux "diamond dust" center. \$61





MIX & MATCH

C o l l e c t i o n



Florence Bracelet 12250

Etched texture of this classic bangle adds shimmer and shine. Wear it solo, stack several, or layer with other bracelets. Available in gold, silver or rose gold finish. \$51



Serena Bracelet 11760

Stretch to fit strand of nuggets and single file channel of crystals. Available in gold, rose gold or hematite. \$73

Dominique Bracelets 11763

This set of five, gently hammered bangle bracelets is a wardrobe must-have. One each of hematite, silver and gold, and two rose gold. Sold in a set of five bangles. \$82



Stylish Bracelet 12232

This contemporary polished, hinged bracelet features a dimpled design and is shaped to fit the wrist. Available in polished silver, gold or rose gold finish. \$164





Chic Earrings 10210

These triple drop circle earrings are mirror bright and light as air. Available in hematite, gold, silver or rose gold. \$24

Chic Necklace 10209

Perfect for layering, this 48-inch long chain is punctuated with stations of mirror-bright circle links. Available in hematite, gold, silver or rose gold. \$65

Chic Bracelet 12212

Big, bold and beautiful, this cuff is dramatic, yet lightweight and flexible. Choose from hematite, gold, silver or rose gold. \$43





Bamboo Earrings 10208

A trio of gleaming bamboo motif rings in white gold, yellow gold, and rose gold, hangs from each earring. \$32



Bamboo Necklace 10207

A trio of gleaming bamboo motif rings in white gold, yellow gold, and rose gold, create the pendant of this tri-color ensemble. 16"+2" ext. \$32



Intertwine Earrings 12003

These are just right when all you need is a small accent. Available in silver, gold, hematite or rose gold finish. \$31





Gilded Necklace 12245

A removable, stippled matte gold pendant is suspended by a magnetic bail from a chain accented with stations of gold and silver. 18"+3" ext. \$109



Gilded Earrings 12246

Matte gold and silver earrings look pretty viewed from the back as well as from the front. \$73



Gilded Ring 12244

A stippled matte gold, quarter-size disk crowns the silver shank of this modern two tone ring. Sizes 5-10. \$73



Gilded Bracelet 12247

Stippled matte silver and gold disks, this two-tone bangle bracelet is contemporary and cool. \$165



Fusion Necklace 11921

Stations of silver and gold rings punctuate this 38-inch long, designer-inspired silver chain. \$109



Front Row Necklace 11929

Interlocking circles of silver, with one golden circle in the center, fashion this two-tone necklace. 18" + 2" ext. \$85



Fusion Earrings 11922

A pair of rhodium silver rings and one gold accent ring create two-tone drop earrings. \$28



Notorious Ring 11913

Two-tone wide band ring with caviar-dot border. Sizes 5-10. \$76





Aruba Sunset Earrings 12215

The center of these elaborate, rose gold quatrefoil shaped earrings is embellished with a sparkling solitaire crystal. \$29



Constellation Ring 12249

Austrian crystals set in silver and gold swirls merge to create this mesmerizing two-tone ring. Sizes 5-10. \$104

Aruba Sunset Necklace 12214

Quatrefoil-shaped charms in mother-of-pearl, silver, and rose gold are suspended from a golden chain in this tri-color necklace. Austrian crystals. 16"+3" ext. \$104



Flair Bracelet 10287

Nineteen flexible coils alternating between cable and smooth texture, create a bold cuff. Available in silver and gold finish. \$27



Connections Bracelet 12005

Layer this link chain bracelet with any other jewelry. Available in silver, gold, hematite or rose gold finish. 7 1/2" +1" ext. \$47



Connections Necklace 12004

Large links fashion this chain necklace that can be worn solo or layered. Available in silver, gold, hematite or rose gold finish. 18" +3" ext. \$76



Whisper Earrings 8916

Feather weight earrings that are delicate and dramatic. Available in silver or gold finish. \$17



Stiletto Earrings 12394

Channel set crystals fashion 2 1/2 inch-long linear earrings. Available in gold, silver, hematite or rose gold finish. \$71



Electrify Earrings 8740

These classic polished hoops are the perfect to go with it all earring. Available in silver or gold finish. \$25



Trifecta Ring 12229

Stack or wear separately. Set of three rippled rings with cubic zirconias. One each: hematite, silver, rose gold finish. Sizes 4-8. \$98





Joyride Earrings 11940

Quatrefoil shaped polished hoop earrings with integrated posts. 1 $\frac{3}{4}$ " diameter. Available in hematite, gold, silver, or rose gold. \$27



Joyride Necklace 12241

A wardrobe must-have, this quatrefoil shaped pendant measures 1 $\frac{3}{4}$ " in diameter and is suspended from a 16" long chain + 3" ext. Available in hematite, gold, rose gold or silver finish. \$38

CUSTOMIZE YOUR COLLECTION



Remix Bracelet/Extender 10820

Remix is the perfect tool to customize your jewelry to make layered looks. Using the lobster claw clasps, attach remix to any necklace, or bracelet for additional length. Available in silver or gold finish. 9" long. \$27



Soft Suede Cords

8183-Black cord

8184-Brown cord

These suede cord necklaces are perfect for pendants, and can also be worn alone.

16" long + 3" ext. \$11



Snap Ring 2185

Use this handy ring to gather and connect strands of chain or beads together to fashion different necklaces. Available in silver or gold finish. \$11



Magic Magnets 8084

Available in gold or silver finish. 1 3/4". \$14





WHIMSY & CHARM

C o l l e c t i o n





32" IN LENGTH

Instaglam Necklace 12322

Crystal framed glass heart and dangling charms. Black chain woven through the links connects to the silky cord necklace. 32"+2" ext. \$119



All Star Earrings 12255

Outlined with Austrian crystals, these star-shaped gold earrings are dance floor-ready. \$43



Juliet Ring 11086

A detailed classic cameo in black & white showcased in its ornate crown setting. Sizes 5-10. \$26



Upon a Star 8042

Cubic zirconia ring feature a shooting star design motif and is sure to attract attention! Sizes 6-10. \$57



Stargazer Necklace 12226

A long jet black faceted glass beads strand paired with a delicate golden chain punctuated with gold stars. 38"+2" ext. \$103





DELICATE

A. Cupcake Necklace 11114

Hand enameled cupcake with white vanilla frosting with multicolored Swarovski “sprinkles” is a sweet confection! 14” + 3” ext. \$43

B. Love Necklace 12220

“Love” pendant is accented with an Austrian crystals. 16”+2” ext. \$81

C. Dream Necklace 12362

Letters spelling “DREAM” slide along the slinky silver chain. 17”+3” ext. \$43

D. Emma Necklace 11834

An ivory ribbon, pearl, genuine rose quartz gem, and an Eiffel Tower charm dangle from this matte gold necklace. 16”+3” ext. \$39

Amour Ring 11195

In silver, the word “love” is spelled out in petite elegant script with a Swarovski crystal Sizes 5-9. \$26



Emma Earrings 11835

An ivory ribbon, pearl, genuine rose quartz gem, and an Eiffel Tower charm dangle from these matte gold post earrings. \$29





& P E T I T E

A. Dove Necklace 11846

A silver dove, adorned with sparkling Austrian crystals, is suspended from a delicate silver chain. 16"+3" ext. \$46

B. Eternity Necklace 12323

A cut-out cross with a sparkling cross on the side of the chain. 17"+2" ext. \$47

C. Prayer Necklace 10335

Accented with a solitaire CZ. 16"+ 2" ext. \$31

D. Secret Necklace 11562

Suspended from its delicate rose gold colored chain, a darling key pendant is sprinkled with micro-mini Austrian crystals. 16"+3" ext. \$62

Dove Ring 11845

An Austrian crystal embellished dove adorns this silver ring. Sizes 5-10 \$36



Intermix Earrings 11451

Burnished silver hoop earrings feature a trio of dangling charms: a crystal, a crown and a sparkling cross. \$30





Affection Bracelet 11901

Mini CZs adorn this dainty silver zig-zag bracelet. Wear solo or layer with other bracelets. 7 ½"+1 ext. \$46



Solara Necklace 12206

Sunburst pendant with Austrian crystals. Suspended from a silver chain. 16"+3" ext. \$108



Tenderness Ring 11899

Delicate swirled ring of silver is set with baby CZs. Sizes 5-10 \$68



Affection Ring 11900

Silver, dainty swirl ring is set with mini cubic zirconias. Sizes 5-10 \$39



Truth Necklace 11736

Matte gold cross adorns the 16"+4" fine black chain of Truth necklace. \$29



Graceful Necklace 8276

This marcasite necklace is 16"+3". \$43



Prince Charming Ring 11261

A Frog ring decked out in green Austrian crystals with ruby crystal eyes. Peridot and green crystals on body. Sizes 5-10. \$127



Hot To Trot Ring 11603

A horse with blue and Austrian crystal-encrusted face and tail. Sizes 5-10. \$186



26" IN LENGTH

Betsy Necklace 11350

This designer-inspired 26" necklace features fuchsia-colored, leopard print pattern encased in faceted overlay. \$61



Amour Necklace 10962

In gleaming silver script this necklace says it all! Measures 16"+3". \$43



Betsy Earrings 11351

Heart-shaped, leopard print patterned earrings add the perfect pop of pink to your wardrobe. \$32



Cherish Bracelet 8028

This bracelet is 7 1/2" with an Austrian crystal. \$27



Rosette Ring 11054

Hematite flower petals encrusted with sparkling rose colored crystals. Sizes 5-10 \$84



Adore Earrings 12327

Puffed hearts suspended from earring wires. Available in silver or gold. \$26



Hope Ring 11077

Clear and pink crystal studded ribbon is tied into a bow with clear baguettes. Sizes 5-10. \$129



Berry Sweet Ring 11396

A strawberry covered with fuchsia crystals. Sizes 5-10. \$137





Intermix Necklace 11450

A 7 1/2" bracelet attached to a 27" long silver chain. Bracelet has tooled disks, a clover, and assorted heart shapes. \$80



Leopard Earrings 11346

Taupe and black leopard motif disks fashion these drop earrings. \$53



Survivor Ring 11569

A leopard print oval sits in a burnished brass frame embossed with reptilian motif. The ring shank stretches to fit most any finger. \$50



Cat Walk Watch 11605

Glittering gold face accented with metallic copper & leopard print. Austrian crystals surround the golden bezel with a black silicone strap. \$131



Leopard Necklace 11345

Taupe and black leopard motif encased in a faceted clear acrylic overlay encircled by a hematite frame. The 26" necklace is enhanced with a surround of Austrian crystals. \$75



Leopard Bracelet 11347

Taupe and black leopard motif disks are linked together to create the stretch-to-fit cuff bracelet. \$119



Panda Ring 11444

Champagne-colored pave Austrian crystals with a panda head. Sizes 5-10. \$150



Rising Star Ring 12324

A petite star, embellished with marcasite, crowns this dainty ring. Sizes 6-10. \$29



Rising Star Earrings 12328

Genuine marcasite gems adorn shimmering star-shaped earrings. \$32



Diamond Ribbons Ring 11380

Dazzling clear and jet Austrian crystals sparkle like diamonds on this lush, puffed bow ring. Sizes 5-10. \$164



Raja Ring 11395

Encrusted with clear, silver and gray Austrian crystals, this 3-D elephant shaped ring is a standout! An elephant with its trunk raised symbolizes good luck. Sizes 5-10. \$196



Journey Ring 11433

Designed in the shape of a wing, this ring sparkles with Austrian crystals and hematite plating. Sizes 5-10. \$40



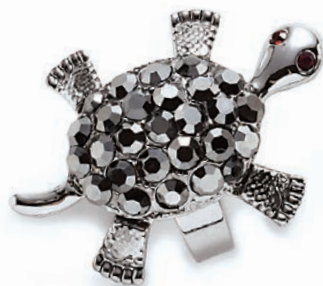
Hooty Earrings 11412

Whimsical little owls sparkle with accent Austrian crystals. Earrings are post style. \$32



Lucky Lady Ring 11160

A ladybug with clear Swarovski crystals and accented with jet, and ruby colored crystals. Sizes 5-10. \$109



Snappy Ring 11897

Silver turtle with hematite Austrian crystals, red crystal eyes, and movable head, legs, and tail. Sizes 5-10. \$62





Swing Time Earrings 12361
Smoky gray orbit beads swing from silver chain to fashion drop earrings. \$18



Papillon Ring 12342
Free-form hematite embedded with aurora borealis crystals, encases the dark aqua resin ring. Sizes 6-10. \$127



Papillon Necklace 12341
Aurora borealis crystals embellish the ornate hematite setting encasing the dark aqua resin butterfly pendant. 36"+3" ext. \$253

Swing Time Necklace 12360
A 6" long tassel swings from a lanyard-style necklace of smoky-gray glass orbit beads. 24" long. \$62





Ocean Treasures Necklace 11066
Matte gold hammered disks, colorful faceted spheres, iridescent mother-of-pearl nuggets, aqua glass beads and mint green amazonite. 36". \$97



Garden Party Earrings 11084
The cascade drop earrings with gold and pastel charms, colorful Swarovski crystals and glass beads. \$40



Garden Party Bracelet 11083
Gold and pastel charms, colorful Swarovski crystals and glass beads. Charms include flowers, leaves, gems of pink, mint, aqua, rose pearl and more. 8"+2" ext. \$80



Fantasy Land Ring 11392
Multi-color Austrian crystals and daisies embellish the dome ring. Sizes 5-10. \$152



Angelina Ring 10855
Hand-painted enamel. Flower petals are sprinkled with Austrian crystals. A glass pearl is nestled in the center. Sizes 5-10. \$76

SPLASH OF COLOR

C o l l e c t i o n



Aqua Fleur Necklace 12320

A silky beige cord suspends an assembly of crystals and aqua glass flowers, all set in gleaming gold. 36"+2" ext. \$245



Margarita Ring 10142

An enormous aventurine gemstone is set in silver and accented with a swirl of crystals. Sizes 6-10. \$69



Bohemian Ring 11836

Cabochon gems in turquoise and coral accented with Austrian crystals and set in a matte gold ring. Sizes 5-10. \$58



Blurred Lines Bracelet 12374

Two bands, one polished, one channel set with crystals, intertwine to create an elegant bangle. Available in gold or silver. \$131



Model is wearing:

Sun-Kissed Necklace 11713

Amulet is adorned by aqua and peach gems, and turquoise crystals. 34" gold chain. \$94

Sun-Kissed Earrings 11714

Replicas of the necklace's pendant adorned by gems of aqua and peach, and bright turquoise crystals. \$131





Highlight Earrings 11915

A trio of tangerine faceted glass gems adorn these rose gold drop earrings. \$61



Highlight Necklace 11914

Rose gold statement necklace adorned with tangerine faceted glass gem clusters. 16" + 3" ext. \$113



Tutti-Frutti Watch 11699

Rose gold casing and an Austrian crystal bezel with a cherry pink leather strap. \$172

Casablanca Necklace 10990

Amethyst, pink and lavender colored Austrian crystals fashion the flower that is the focal point of this necklace. Cats eye and cabochon gems finish the multi faceted statement necklace. 18"+3" ext. \$121





Soho Bracelet 11602

Mosaic mix of coral, aqua blue, and vanilla enamel fashions a hinged bracelet. \$87



Filigree Earrings 12380

Simulated turquoise gems sway from delicate golden filigree earrings. \$38



Model is wearing:

Bohemian Necklace 11596

Multiple long strands of seed beads in a mix of white, peachy coral, aqua, turquoise, bronze and gold are casually knotted on one side. 36"+3" ext. \$186



Tickle Earrings 12399

A simulated turquoise sphere and a gold bead join the feather on these drop earrings. \$46



Tickle Necklace 12398

A solitaire pearl amulet, an aqua glass gem and a gold feather pendant suspended from a burnished gold chain. 16"+3" ext. \$68





Utopia Earrings 12288
 Blue and periwinkle faceted oval gems accented by crystals. \$54



Waves Bracelet 12314
 Clear and aqua crystals form “waves” across the hinged cuff. \$153



Utopia Necklace 12287
 Bars embellished with crystals and gems of cobalt blue and periwinkle are suspended side by side to fashion a bib-style necklace. 16”+ 3”ext. \$240



Rio Earrings 11837

A filigree framed turquoise stone, blue Austrian crystals and turquoise beads matte gold chandelier earrings. \$91



Janeiro Earrings 11839

Turquoise gems mounted in matte gold. Blue Austrian crystal. \$49



Rio Ring 11840

A framed turquoise cabochon gem tops this bold, matte gold ring. Sizes 5-10. \$43



Eva Ring 11096

A huge turquoise cabochon gem and pave Swarovski crystal. Sizes 5-10. \$196



Cool Water Ring 8991

A Silver dome ring is crowned by a bold turquoise gemstone. Sizes 6-10. \$58



Skye Ring 11770

Turquoise cabochon gem and pave Swarovski crystals. The open filigree back allows in light to maximize sparkle. Sizes 5-10. \$76



*Model is wearing:
Parisian Earrings
12376*

Vivid magenta glass gemstones and amethyst Austrian crystals. \$84

*Parisian Necklace
12377*

Magenta colored faceted glass gems, framed with amethyst Austrian crystals, are suspended from a purple cord. 16"+3"ext. \$226



Wisteria Ring 12351

Ombre blended rows merge lavender, clear, violet and purple crystals on this silver dome ring. Sizes 6-10. \$76



Passion Ring 11907

A Hematite frame set with amethyst Austrian crystals and an ultra-violet druzi gem. Sizes 5-10 \$75



Dynamite Ring 11916

Austrian crystal dome ring with a silver shank. Available in clear, lavender, jet black or topaz Austrian crystals. Sizes 5-10 \$151



Model is wearing:

Peach Bellini Earrings
12335

Beveled glass mirrored rectangles, edged in silver. \$44

Peach Bellini Necklace
12336

Peach champagne colored beveled glass mirror rectangles, edged in textured silver, create a contemporary necklace. 32" +3" ext. \$115

Peach Bellini Bracelet
12334

Peach champagne colored beveled mirror stones. Glam bracelet fastens with a toggle & ring. Adjusts from 7 1/2" to 8 1/2" long. \$148



Wow Ring
11124

A magnificent mosaic of emerald cut and princess cut CZs create this rectangular knuckle to knuckle ring. Sizes 5-12. \$102



Striking Ring
10147

A glittering frame of CZs. presents its amazing emerald cut CZ gemstone in a unique horizontal bridge setting. Sizes 6-10. \$91



Marry Me Ring
11684

Sitting atop an elaborate silver shank set with CZs, this emerald cut solitaire CZ is set in silver. Sizes 5-10. \$151



Imperial Ring
12344

Brilliant clear crystals surround a mega carat topaz Austrian crystal gem. Sizes 6-10. \$87





Celine Necklace 12248

Suspended from black cord, a shimmering faceted glass gem, framed with glittering Austrian crystals. Available in azure blue or emerald green. 16"+3"ext. \$127



Emerald City Ring 11264

Hematite plated shank encrusted with tiny crystals in green, celadon, aqua and a genuine turquoise baby seed beads. Sizes 5-10. \$141



Volume Bracelet 8960

Nine hammered silver bracelets intertwined creating a voluminous bangle bracelet. \$38



Hampton's Ring 12257
 Aquamarine teardrop gem and Austrian crystal accents in sparkling aurora borealis and aquamarine.
 Sizes 5-10. \$104



Splash Ring 11598
 Square-cut CZ gem with a pool of aqua blue framed with aquamarine colored Austrian crystals.
 Sizes 5-10. \$121



Hampton's Necklace 12256
 Aquamarine faceted glass gem with teardrop-shaped pendant framed by aqua Austrian crystal baguettes and aurora borealis pave crystals. 17"+1" ext. \$153



Hampton's Earrings 12273
 Aquamarine glass teardrops with aurora borealis and baguette-shaped aqua Austrian crystals. \$109





High Five Rings 12337

Set of FIVE hammered silver rings to wear stacked or separately. Each boasts a glass gem; light blue, mystic opal, pink and two clear. Sizes 6-10. \$96



L.A. Fun Bracelet 11265

Hot pink faceted ovals are framed with glittering mauve-pink crystals. \$186



Shanghai Bracelet 11862

Red resin gems in assorted geometric shapes adorn this antiqued gold, wide hinged cuff. \$83



Raspberry Ring 11761

Vivid gems of magenta pink, ruby and olive green mystic opal merged together. Sizes 5-10. \$109



Center Stage Bracelet 8928

Cubic zirconia gems ruby, peridot, topaz, garnet, pink tourmaline and amethyst. Stones twinkle between the faux diamond bar links that are encrusted with sparkling clear pave stones. 7 ½ inches long. \$291



Cabernet Earring 11919

Ruby glass faceted oval gemstones are mounted in rose gold earrings. \$90

Cabernet Necklace 11920

Ruby glass faceted gems, set in rose gold, and suspended from a black grosgrain ribbon woven through links of the gold chain.

16"+3"ext. \$223



Signature Bracelets 8659

This upscale, designer-inspired ensemble is fashioned from sparkling faceted gems set in two-tone crown settings. 8" long.

Available in ruby, topaz, clear, jet, amethyst, olivine, pink, aurora borealis, and multi-color. \$549



OLIVINE



TOPAZ



JET



CLEAR



AMETHYST



RUBY



PINK



MULTI-COLOR



AURORA BOREALIS



H O S T E S S - O N L Y

C o l l e c t i o n



Hall of Mirrors 12310 *on model

Clear and gray glass jewels. 17 1/2" + 2 1/2" ext.
Retail \$378. HOSTESS \$126



Masquerade Necklace 11108

CZ's. 18". Retail \$336.
HOSTESS \$112



Masquerade Earrings 11110

CZ's. Retail \$120. HOSTESS \$40

Masquerade Ring 11079

CZ's. Sizes 5-10. Retail \$120.
HOSTESS \$40



Infinity Bracelet 11142

Hematite Swarovski Crystals. Retail \$285.
HOSTESS \$95



Luxe Ring 11561

Austrian Crystals. Sizes 5-10.
Retail \$171. HOSTESS \$60

Jubilee Ring 11619

Austrian Crystals.
Sizes 5-10. Retail \$96.
HOSTESS \$32

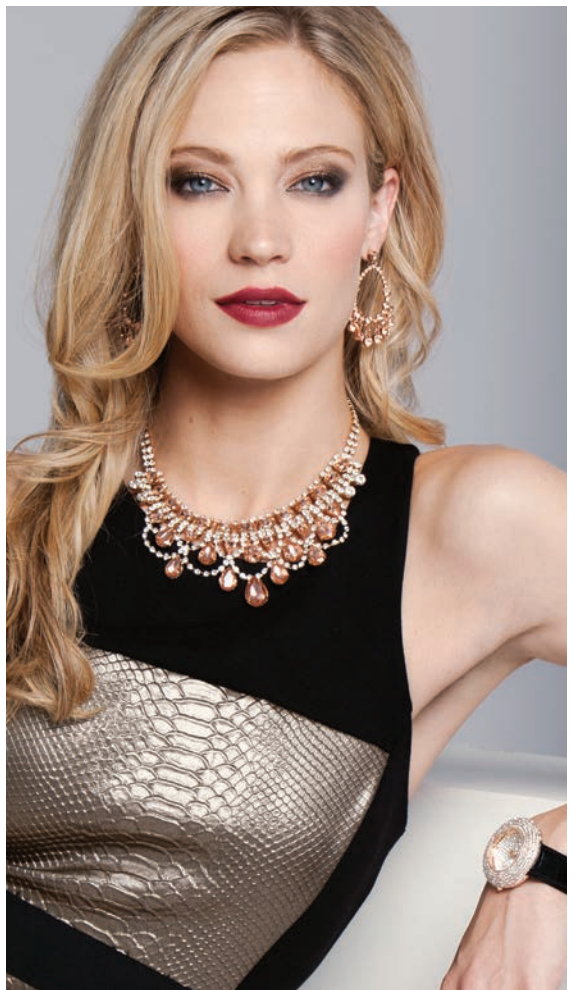




Crown Jewels Necklace 12367

Lacy scalloped rows of clear and peach-colored crystal jewels fashion an extraordinary bib necklace. 11 1/2" + 3" ext.

Retail \$330. HOSTESS \$110



Duet Bracelet 12343

Rings of gold, set with Austrian crystals, are linked by sparkling silver bars. 7" long.

fold over clasp. Retail \$198. HOSTESS \$66



Va Va Voom Ring 12317

Sparkling CZs in fine golden mesh, encase the crest of this dome ring. Sizes 6-10 .

Retail \$225. HOSTESS \$75



City of Lights Watch 12393

Rose gold bezel ablaze with pave crystals frames the faux "diamond dust" crystal-encrusted watch face.

Retail \$312. HOSTESS \$104





Extravaganza Necklace 12259
 Clear Austrian crystals.
 Retail \$357. HOSTESS \$119



Extravaganza Earrings 12261
 Clear Austrian crystals.
 Retail \$108. HOSTESS \$36



Extravaganza Bracelet 12260
 Clear Austrian crystals.
 Retail \$180. HOSTESS \$60



Razzle Dazzle 12338
 Austrian crystals.
 Sizes 5-10.
 Retail \$303.
 HOSTESS \$106



Heaven Watch 11812
Austrian crystals.
Retail \$237. HOSTESS \$79



Pure Posh Bracelet 11863
Austrian crystals.
Retail \$198. HOSTESS \$66

Karolina Bracelet 11188
Austrian crystals.
Retail \$261. HOSTESS \$87



Opal-Essence Bracelet 11198
Clear & Opal CZ's. 8"+1 1/2".
Retail \$237. HOSTESS \$79



Opal-Essence Necklace 11197
Clear & Opal CZ's. 16"+3".
Retail \$460. HOSTESS \$137



Opal-Essence Earrings 11199
Clear & Opal CZ's.
Retail \$160. HOSTESS \$38

Opal-Essence Ring 11200
Clear & Opal CZ's.
Sizes 5-10.
Retail \$144. HOSTESS \$48





Waterford Bracelet 8212
CZs. 8". Retail \$327. HOSTESS \$109



Park Avenue Bracelet 10106
Clear CZs. Retail \$306. HOSTESS \$102



Diamondaire Bracelet 12231 CZs.
7 1/2". Retail \$138. HOSTESS \$46



All Night Bracelet 12251
Jet CZs. Retail \$306. HOSTESS \$102



Hollywood Bracelet 8106
CZs. 7 1/2". Retail \$228. HOSTESS \$76



Show Girl Bracelet 10481
Swarovski Crystals.
Retail \$93. HOSTESS \$32



Jessica Bracelet 11559
Swarovski Crystals. 7 1/2".
Retail \$582. HOSTESS \$194



Diamante Ring 10200
CZ's. Sizes 6-10.
Retail \$114. HOSTESS \$38



Heidi Watch 11119
Swarovski crystals. Available in silver or
gold finish. Retail \$216. HOSTESS \$72



Jasmine Bracelet 11709
Austrian Crystals. 7"+2" ext.
Retail \$120. HOSTESS \$40



Jasmine Ring 11710
Austrian Crystals. Sizes 5-10.
Retail \$96. HOSTESS \$32

Bella Watch 12292
Austrian crystals.
Retail \$138. HOSTESS \$46



Jasmine Necklace 11708
Austrian Crystals. Sizes 5-10.
Retail \$360. HOSTESS \$120





Michelle Necklace 11288

Turquoise & CZs. 17"+3". Retail \$768. HOSTESS \$256



Michelle Earrings 11289

Turquoise & CZs. Retail \$219
HOSTESS \$73



Emerald Goddess Ring 11802

Austrian crystals and glass jewels.
Sizes 5-10. Retail \$108. HOSTESS \$36



Princess Bracelet 11993

CZ's. 7 1/2". Retail \$186. HOSTESS \$62



Heidi Watch 11119

Swarovski crystals. Available in silver
and gold finish. Retail \$216.
HOSTESS \$72



South Beach Bracelet 12258

Available in Azure blue or Mint green. Retail \$396. HOSTESS \$132



Wild Diamonds Watch 11482

Swarovski crystals. Retail \$260.
HOSTESS \$66



Gone Wild Earrings 11464

Swarovski crystals.
Retail \$186.
HOSTESS \$62



Gone Wild Necklace 11463

Swarovski crystals. 16"+3".
Retail \$147.
HOSTESS \$49



*The Rage
Bracelet 11461*

Swarovski crystals.
Available in black,
blue, or pink.
Retail \$249.
HOSTESS \$83



INDEX - REGULAR IN-LINE JEWELLERY

Affection	68	Diamond Dust	8	Highlight.....	76
All Star	65	Diamond Ribbons	71	High Voltage.....	11
Adore	16,69	Dominique.....	21,55	Hilo	37
Amour.....	14,66,69	Double Take.....	35	Hooty	3,71
Angel.....	35,48	Dove.....	67	Hope.....	69
Angelina.....	73	Dream	66	Hot to Trot	68
Antigua.....	29	Dynamite	15,31,80	Identity.....	49
Applause.....	19	Electrify	26,61	I Do	35
Aqua Fleur.....	75	Emerald City.....	82	Imagine	40
Aruba Sunset.....	60	Emma.....	66	Imperial.....	15,81
Aspen.....	50	Encircle.....	32	Infinite	16
Backstage Pass.....	49	Encore.....	8	Instaglam.....	65
Bamboo.....	57	En Vogue.....	9,13,20	Intermix.....	57,70
Believe	14,35	Erika.....	6	Intertwine.....	5
Belle.....	22	Espana	8	In the Loop.....	10
Bellini	32	Eternity.....	16	Intimate.....	6
Berry Sweet.....	69	Euphoria	51	Ivoire	28
Betsy.....	69	Eva.....	79	Janeiro	79
Bliss.....	47	Evening Sky	17	Jolt	7
Blurred Lines	75	Everyday Diva	25,51	Journey	71
Bohemian.....	75,77	Fame.....	10,49	Joyride.....	19,62
Bombshell	52	Fantasy Land	73	Juliet.....	23
Brad	42	Fascinated	30,47	Kate.....	36
Bravo	49	Fashion-able.....	6	Kimberly.....	52
Breathtaking.....	52	Festive.....	43	Lacy	33
Brunette.....	29	Filigree.....	77	La Femme.....	17
Cabernet.....	85	Flair	33,60	L.A. Fun.....	84
Camillia.....	22	Flirt.....	53	Legacy	13
Caribbean.....	43	Florence	55	Le Louvre	32
Casablanca.....	76	Four Square	38,39	Leopard.....	70
Cat Walk	70	Francais	13	Linked In	3,9
Celine.....	82	Freestyle.....	44	Love	66
Center Stage.....	84	French Vanilla.....	37	Lucky Lady	71
Cherish	69	Front Row	59	Magical.....	15,40
Chic.....	4,9,20, 23,56	Fusion	59	Magic Magnets.....	63
Christian.....	7	Game On.....	8	Magnificent	41
Classique.....	14,22	Garden Party	73	Main Event	27
Cleo.....	16	Get Lucky	42	Majesty.....	6
Connections	21,26,30,61	Gilded	58	Margarita	75
Constellation	20,60	Glam & Go.....	4,27	Marry Me	81
Cool Water.....	79	Glitter Girl.....	12	Matinee	36
Cupcake	66	Gorgeous.....	11,27	Matrix.....	7
Dainty	16	Graceful.....	68	Mia	53
Dare.....	11	Hamptons	83	Midnight.....	6
Delicate	53	Heiress.....	37	Midori	42,43
Diamond Couture	31	High Five.....	84	Mingle.....	42

Moulin Rouge42
 New Moon37
 Notorious.....59
 Ocean Treasures.....73
 Onyx13,15
 Ovation7,15,50
 Palm Beach26
 Panda70
 Papillon72
 Parisian80
 Passion80
 Peach Bellini17
 Point of View5
 Prayer67
 Prince Charming68
 Raja71
 Raspberry84
 Reign12,14
 Remix63
 Reveal10,26
 Rico42
 Rio79
 Rising Star14,71
 Rodeo Drive.....28,51
 Role Model.....45
 Rosa19
 Rosette69
 Santa Cruz5
 Sateen.....35
 Savvy4
 Scandal.....11,33
 Secret14,22,67
 Seduction19
 Serena.....55
 Shanghai.....84
 Signature85
 Skye79
 Snappy71
 Snap Ring63
 Soft Suede.....63
 Soho77
 Solara68
 Sparkling.....53
 Spartas.....49
 Spellbound3
 Spike.....27
 Splash83

Spoil Me15,36
 Stack it8,14
 Starburst17
 Stargazer.....25,65
 Starring Role.....13
 Step-Up12,21
 Stiletto61
 Striking81
 Studded33
 Stylish21,55
 Sun-Kissed.....75
 Supreme5
 Survivor.....70
 Sway42
 Sweet53
 Swing Time72
 Tenderness.....68
 Tickle77
 Tier Drop30
 Tres Chic.....25,32,50
 Trifecta.....61
 Trillion.....47
 Truffles29
 Truth.....33,68
 Tutti-Frutti76
 Tuxedo8
 Twilight3,15
 Unite.....47
 Upon a Star14,65
 Utopia78
 Verona9,23,33,48
 Versailles17,25
 Vintage29
 Vivid.....16
 Volume82
 Waves.....78
 Whimsy50
 Whisper.....61
 Wisteria15,80
 Wow81
 Zac42

Diamante.....90
 Diamondaire90
 Duet.....87
 Emerald Goddess92
 Extravaganza.....88
 Going Wild93
 Hall of Mirrors86
 Heaven89
 Heidi.....90,92
 Hollywood.....90
 Infinity86
 Jasmine91
 Jessica.....90
 Jubilee86
 Karolina89
 Luxe86
 Masquerade.....86
 Michelle.....92
 Opal Essence89
 Park Avenue.....90
 Princess92
 Pure Posh.....89
 Razzle Dazzle.....88
 Show Girl90
 South Beach93
 The Rage93
 Va Va Voom87
 Waterford90
 Wild Diamonds93

3 BOOKING GIFTS

Aura96
 Dazzler.....96
 Exquisite96
 Extraordinary96
 High Society.....96
 Holiday96
 Je T'aime96
 Monaco96
 Noelle.....96
 Posh.....96
 Ritz96
 Sapphire Drama96
 Smashing.....96
 Sparkle.....96
 Taylor.....96
 Tiara96
 Tulip.....96

HOSTESS ONLY

All Night90
 Bella91
 City of Lights87
 Crown Jewels87



3 BOOKING RINGS

As a free bonus award for obtaining three qualified* bookings at her show, a hostess may choose any one item from Park Lane's Three Booking Gift Collection or any regular line item valued up to \$100!

*Refer to the Five Star Hostess Plan brochure for details and qualified booking requirements.



A. Sapphire Drama Ring 11724
Austrian Crystals.

Retail \$121. Sizes 5-10.

B. Noelle Ring 10696

CZ's. Retail \$153. Sizes 5-10.

C. Ritz Ring 12325

Austrian Crystals.

Retail \$123. Sizes 6-10.

D. Tulip Ring 11292

CZ's. Retail \$153. Sizes 5-10.

E. Posh Ring 10678

CZ's. Retail \$119. Sizes 5-10.

F. Extraordinary Ring 10934

CZ's. Retail \$147. Sizes 5-10.

G. Je t'aime Ring 11055

CZ's. Retail \$136. Sizes 5-10.

H. Smashing Ring 11473

CZ's. Retail \$154. Sizes 5-10.



High Society Ring 10739

Swarovski Crystals.

Retail \$153. Sizes 5-10.



Monaco Ring 11844

Austrian Crystals.

Retail \$143. Sizes 5-10.



Tiara Ring 12228

Retail \$124. Sizes 5-10.



Dazzler Ring 10527

CZ's. Retail \$113. Sizes 6-10.



Exquisite Ring 10328

CZ's. Retail \$127.

Sizes 6-10.



Taylor Ring 8914

CZ's. Retail \$112.

Sizes 6-10.



Holiday Ring 8961

CZ's. Retail \$113.

Sizes 5-10.



Sparkle Ring 8329

CZ's. Retail \$110.

Sizes 5-10.



Aura Ring 11623

Retail \$118. Sizes 5-10.

PARK LANE JEWELLERY

is a Dream Opportunity...



Earn free designer jewellery through RRC



The richest compensation plan in the industry



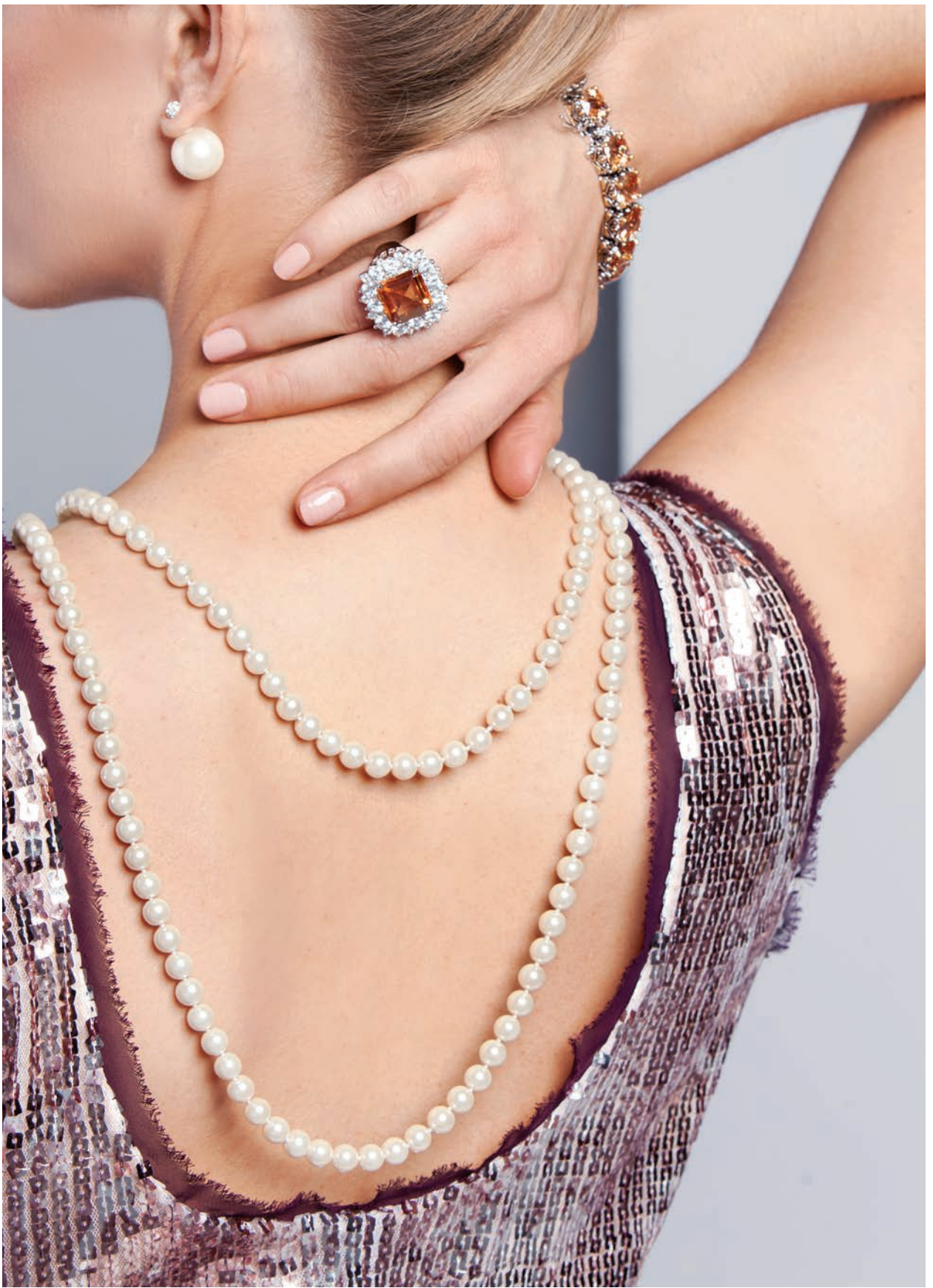
Earn free vacations



Begin your business without any out-of-pocket investment



Enjoy more personal and family time



JOIN PARK LANE TODAY AND START YOUR BUSINESS

DIRECTOR:

©PARK LANE JEWELRY
PRINTED IN THE U.S.A | 2014-2015 CATALOG | SUPPLY # 500
100 EAST COMMERCE DRIVE SCHAUMBURG, ILLINOIS 60173

PARKLANEJEWELLERY.COM.AU

