

park + lane
ESTABLISHED SINCE 1928
FOR
LIVE FROM THE
ERED
CARPET



PARK LANE FOR E! LIVE FROM THE RED CARPET

Park Lane for E! Live From the Red Carpet jewelry collection debut the precise balance between timeless elegance and the ultimate statements in modern luxury. This seasons soirees call for elegant jewels in bold, saturated hues and luminous materials that will light up your night. Get ready for your close up wearing Park Lane for E! Live From the Red Carpet jewelry.



LIMITED EDITION

CURTAIN CALL NECKLACE #20104 \$699

Strands of shimmering jet crystals fashion a dramatic drape to adorn your neckline. The double-hook closure sizzles with diamond-like crystals. Wear it to the side, front, or back . . .

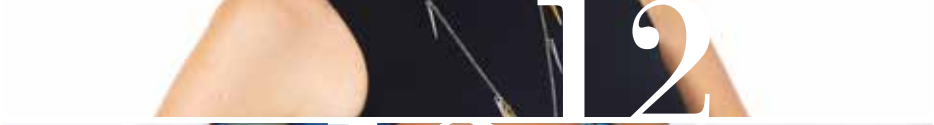
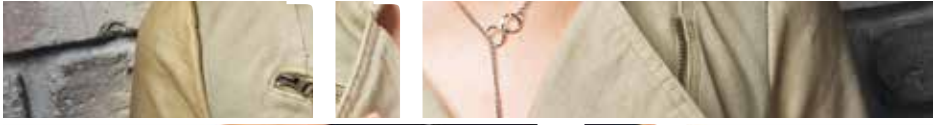
It's too stunning to cover up! 20". *2500 pieces available.

Curtain Call necklace may not be selected as a customer's FREE bonus item.



JETSETTER RING #20101 \$167

Oversize silver prongs, one adorned with glittering crystals, embrace a mega-size jet crystal gem. Command attention wearing this statement ring. Size 6-10.





MIRACLE BRACELET
#20099 \$84

Golden rings and a crystal-embellished cross fashion a bridge that connects with a spring ring clasp to the sleek, slender bracelet. Stack with other bangles.

SHOW BIZ EARRINGS
#20097 \$36

These lightweight, open chandelier earrings sway, swirl and twirl with your every move. Available in textured silver or textured gold.

INFINITE RING
#20087 \$41

Channel-set miniature crystals embellish the "infinity" symbol of this sparkling ring. Available in both gold and silver. Sizes 5-10



LUNAR NECKLACE

#20091 \$257

A bold bib of gently-hammered matte-gold half-moon crescents fashions this amazing statement necklace. 22" + 3"



FRENZY EARRINGS

#20098 \$40

A profusion of golden leaves cascade from these shoulder-grazing, light-as-air earrings. Fishhook. 4" long



INFINITE NECKLACE

#20063 \$43

Suspended from its delicate chain, the sparkling Infinity symbol is channel-set with Austrian crystals. Available in gold and silver. 15" + 3"



NOW & FOREVER NECKLACE

#20050 \$68

Suspended from its shimmering chain, an Austrian crystal-embedded sparkling disk pendant encircles a cut-out open cross. Available in gold, rose gold, or hematite. Sold separately. 15" + 3"



LA VIE BRACELET #20089 \$273

Encircle your wrist with the countless diamond-like crystals that embellish this spectacular inch-wide bracelet. 6.5"

**OWN THE NIGHT NECKLACE
#20021 \$249**

Knotted bold black satin rope anchors the dramatic pavé hematite crystal disk. 19"



MIX IT UP RINGS #20067 \$64

Three hematite rings, each adorned with a faceted jet black gemstone, nest together to create a shimmering trio; or slip each ring on a different finger. Sizes 5-10

BEL-AIR NECKLACE #20071 \$195

A chic mix of three necklace layers in one. A flexible hematite coil, a strand of faceted jet gems and a bold hematite chain merge to make a glamorous statement necklace. 14.5" + 4"



INSANELY IT RING #20013 \$147

The faceted jet-black oval is surrounded by a pavé Austrian crystal-encrusted frame accented with two princess-cut CZs. Sizes 5-10.

AVALON BRACELET #20066 \$86

This bold hematite hinged cuff bracelet makes a major statement. Wear one on each wrist for double the impact.

SHOW BIZ EARRINGS #20097 \$36

These lightweight, open chandelier earrings sway, swirl and twirl with your every move. Available in textured silver or textured gold.







HEADLINER NECKLACE #20096 \$68

Mirror-bright golden arcs bridge two strands of bold link chain. Turn heads in this avant-garde necklace. 16" + 3"



CHEVRON BRACELET #20014 \$55

These hand-painted enamel, retro chevron-motif bangle bracelets arecast in polished gold tone. Available in black or white. Sold separately.

GOLD COAST RING #20040 \$117

A genuine black agate quatrefoil-shaped gem merges seamlessly with the sculptured shank of this bold gold dome ring. Sizes 5-10.

ROOSEVELT BRACELET #20072 \$190

A profusion of sparkling crystals, each set in golden prongs, embellishes the wide, black suede strap. Anchored to your wrist with adjustable golden snaps.

GOLD COAST NECKLACE #20039 \$104

The 42-inch gold chain is embellished with designer influenced quatrefoil accents presented in black.

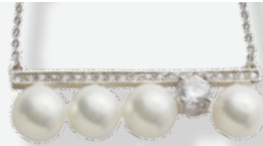


LA VIE NECKLACE #20084 \$364

Row-upon-row of sparkling crystals that drape your neckline with opulence. 20" + 2"

MOMENTS NECKLACE #20083 \$47

Suspended from its delicate silver chain, a parade of white pearls and one sparkling solitaire crystal march along the crystal-embellished bar pendant. 16" + 3"



UNFORGETTABLE EARRINGS

#20082 \$169

Sparkling clear and marquise-cut jet-black crystals adorn these incredible chandelier earrings that drop a stunning four inches.

WITH A TWIST NECKLACE

#20085 \$203

The crystal-embellished, twisted curve pendant is suspended from a unique, hematite coil chain. 14" + 3"



STRAIGHT UP EARRINGS #20100 \$39

These crystal-accented miniature arrows go straight to the heart of the matter. Wear them yourself, or play Cupid and GIFT a pair!



INNER CIRCLE NECKLACE #20095 \$81

Suspended from a dainty silver chain, the solitaire cz gem is surrounded by a ring of gold sprinkled with mini crystals. Can also be worn separately. The perfect two-tone wardrobe accessory. 18"

NOW & FOREVER RING #20054 \$49

Shimmering channel-set CZs outline the cross of this on-trend ring. Wear Now & Forever rings stacked or separately. Available in hematite, gold or rose gold. Sizes 5-10. Sold separately.



BLESSED NECKLACE #20094 \$63

This go-with-it-all necklace fastens by slipping the Cross into the Infinity symbol. Wear the closure in front or on the side.

Available in silver and in gold. 20"



SPIRIT EARRINGS #20103 \$55

Two spear-shaped pendants, one silver and one gold, dangle from these cool and contemporary fishhook-style earrings.

SPIRIT NECKLACE #20102 \$111

Stations of gold and silver "spears" dangle from a delicate silver chain. 27" + 3"



VIBE NECKLACE

#20037 \$85

Each strand of this 2-in-1 necklace features an Austrian crystal-encrusted dagger-style pendant. Wear the 22-inch long strand together with, or separated from the 18" + 3" necklace.

NOUVEAU EARRINGS

#20081 \$33

A satin-finish gold half-moon accents the base of these 3-inch long elliptical hoop earrings.

NEWPORT EARRINGS
#20062 \$117

Polished blue Jasper gemstones are set in delicate silver beadwork and artfully arranged to create dramatic chandelier earrings. * Genuine stones will vary slightly.



LAPIS RING
#20061 \$120

Prong-set in gleaming silver, this mega-size, teardrop-shaped genuine blue Jasper gemstone ring is a guaranteed complement-gatherer. Sizes 5-10. *Genuine stones will vary slightly.

LAPIS NECKLACE #20060 \$364

This profusion of genuine blue Jasper gemstones creates a mesmerizing cascade necklace. 16" + 3"
*Genuine stones will vary slightly.



JASPER NECKLACE #20048 \$364

An elaborate cascade of genuine green Jasper gemstone nuggets results in a dramatic statement necklace. 16" + 3" *Genuine stones will vary slightly.



VIOLET NECKLACE #20080 \$364

An elaborate cascade of polished flat genuine purple Jasper gemstones creates a dramatic, show-stopping statement necklace. 16" + 3" *Genuine stones will vary slightly.



TRIBAL BEAUTY EARRINGS
#20023 \$85

Matte gold cones and burnished gold fringe sway freely on an arc of Austrian crystals in these spectacular shoulder-duster earrings.

TRIBAL BEAUTY NECKLACE
#20022 \$67

Matte gold cones and burnished gold fringe dangle from an arc of sparkling Austrian crystals that is suspended from a burnished gold chain. 28" + 3"



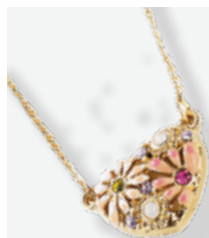


FAITH BRACELET #20079 \$49
INSPIRE BRACELET #20077 \$49
SWEET BRACELET #20078 \$49

A heart accent and bold gold sliding letters adorn these on-trend wrist straps. Choose or mix and match "FAITH", "SWEET", or "INSPIRE"! Adjusts from 7" to 7.5" Snap closure.

ETERNITY BRACELET #20056 \$20
CROSS MY HEART BRACELET #20057 \$20
LOVE ME BRACELET #20059 \$20

Pink suede cords anchor your choice of a gleaming silver eternity/infinity symbol, a sleek silver cross, intertwined silver hearts, or the word "Love". Slip knots adjust to fit. Wear one or stack several.



DAISY NECKLACE
 #20041 \$43

Austrian crystal-accented colorful daisies fashion this heart-shaped pendant suspended from its 15-inch gold chain.

DAISY EARRINGS
 #20042 \$27

A tiny pink crystal shimmers from the center of these dainty earrings.



BFF NECKLACES
 #20076 2 for \$59

This delicate golden necklace features a solo CZ accent and a "bff" (best friends forever) pendant. Sold as a pair... Keep one for yourself and give one to your bff! 16" + 3"



ANGEL CITY RING #20065 \$78

The arched crystal-encrusted wings of this unique 3-D ring appear ready to take flight. Available in gold, silver, hematite, and rose gold finish with clear crystals; and in silver with ruby pink crystals. Sizes 5-10



DIVINE RING #20090 \$49

Available in gold or silver, this on-trend ring can be worn above or below the knuckle. Slip it on and pinch the open back to adjust the fit. Sizes 5 - 10



HAUTE HIPSTER BRACELET #20073 \$161

Sections of genuine mother-of-pearl, opals, agate beads and crystals are woven into leather cording and merge to create one long strand. As you wrap your wrist, the stones stack to fashion a multi-color bracelet.

*Genuine stones will vary slightly.



AWAKEN BRACELET #20024 \$46

An Austrian crystal-studded cross adorns this chic, stretch-to-fit bracelet of sparkling faceted beads. Available in hematite or copper. Sold separately.



HALO BRACELET #20052 \$75

Crystals and burnished studs punctuate the leather strap that wraps the wrist to showcase a cross embellished with Austrian crystals. Available in black or white.

CELEBRATE YOUR SEASON IN
BOLD STYLE AND BRILLIANT COLOR
WEARING RED CARPET WORTHY
JEWELRY DESIGNED ESPECIALLY FOR
YOUR PARK LANE STAR STUDDED EVENING.



PARK LANE JEWELRY
(800)621-0088
PARKLANEJEWELRY.COM



2 2 9 9